

# CERTIFICATE OF LOCATION OF GOVERNMENT CORNER

EAST QUARTER Corner of Section 9, Township 107, Range 42, 5TH P.M.

STATE OF MINNESOTA, County of MURRAY

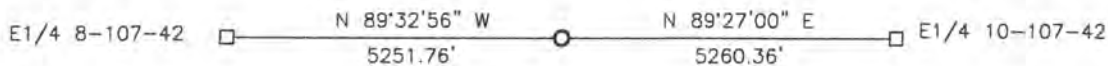
At the corner location shown on the sketch:

On 09-17-2018 found a PK NAIL  
DATE

left monument as found,  lowered monument,  removed monument (explain)

On \_\_\_\_\_ placed a \_\_\_\_\_  
DATE

### SKETCH OF REFERENCE TIES



Minnesota State Plane Coordinate  
System Murray County Datum  
NAD83 (1996)

N: 187369.659  
E: 469246.123

Statement of evidence relative to this corner location is on back of page.

I hereby certify that this document and the data contained herein was prepared by me or under my direct supervision.

Daniel L. Bueltel  
License No. 43844

1/31/2019  
DATE

STATE OF MINNESOTA, } ss.  
COUNTY OF MURRAY,

I hereby certify that the within Instrument was filed in the office for record on the 5TH day of FEBRUARY A.D. 20 19 at 9:00 o'clock A. M., and was duly recorded as Document No. \_\_\_\_\_

County Recorder

## Statement of Evidence

E1/4 9-107-42

In 1861, L. G. M. Fletcher did the original subdivision of the township.

On October 21, 1927, the Murray County Highway Department set a concrete block at the corner.

On January 24, 1958, the Minnesota DNR found a concrete block at the corner.

On April 20, 1989, the Murray County Highway Department found an iron pin at the corner.

On August 19, 2013, the Murray County Highway Department set a PK nail at the surface of the road after overlay.

On September 17, 2018, Bueltel-Moseng Land Surveying found a PK nail at the corner.